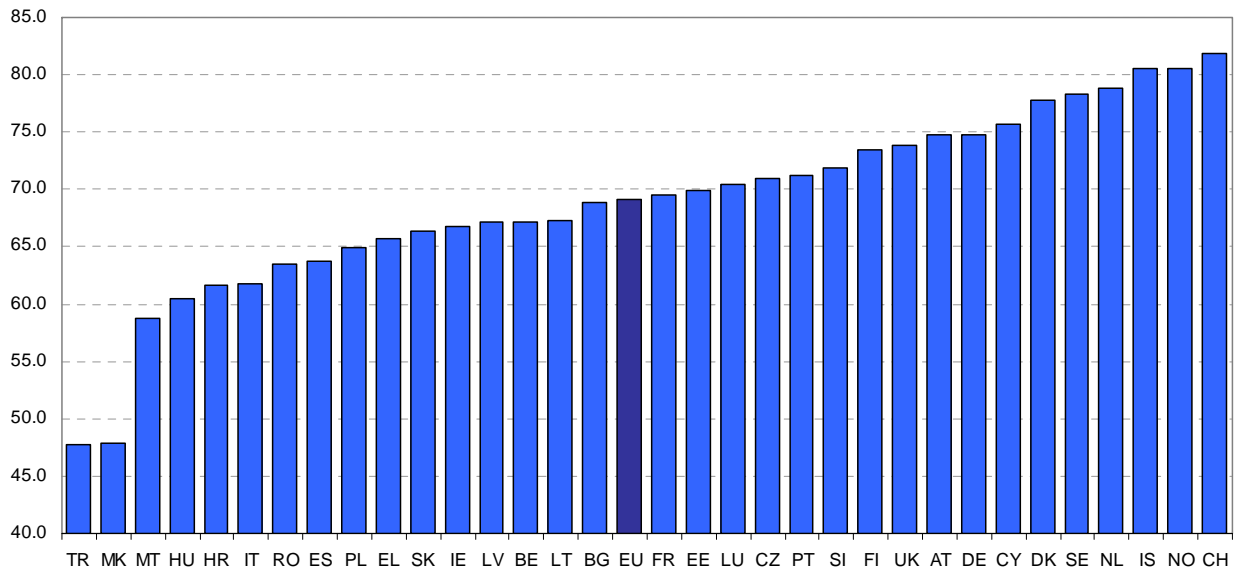


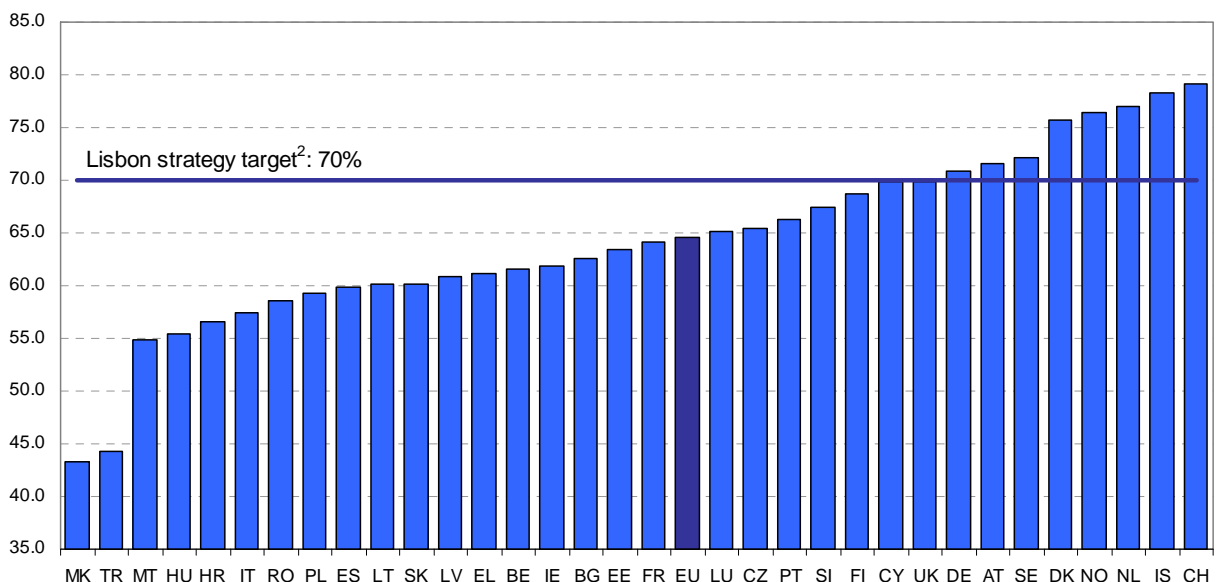
## European Union Labour Force Survey - Annual results 2009

**Chart 1: Employment rate of persons aged 20 to 64 years<sup>1</sup>, 2009, %**



Source: Eurostat ([lfsi\\_emp\\_a](#))

**Chart 2: Employment rate of persons aged 15 to 64 years, 2009, %**



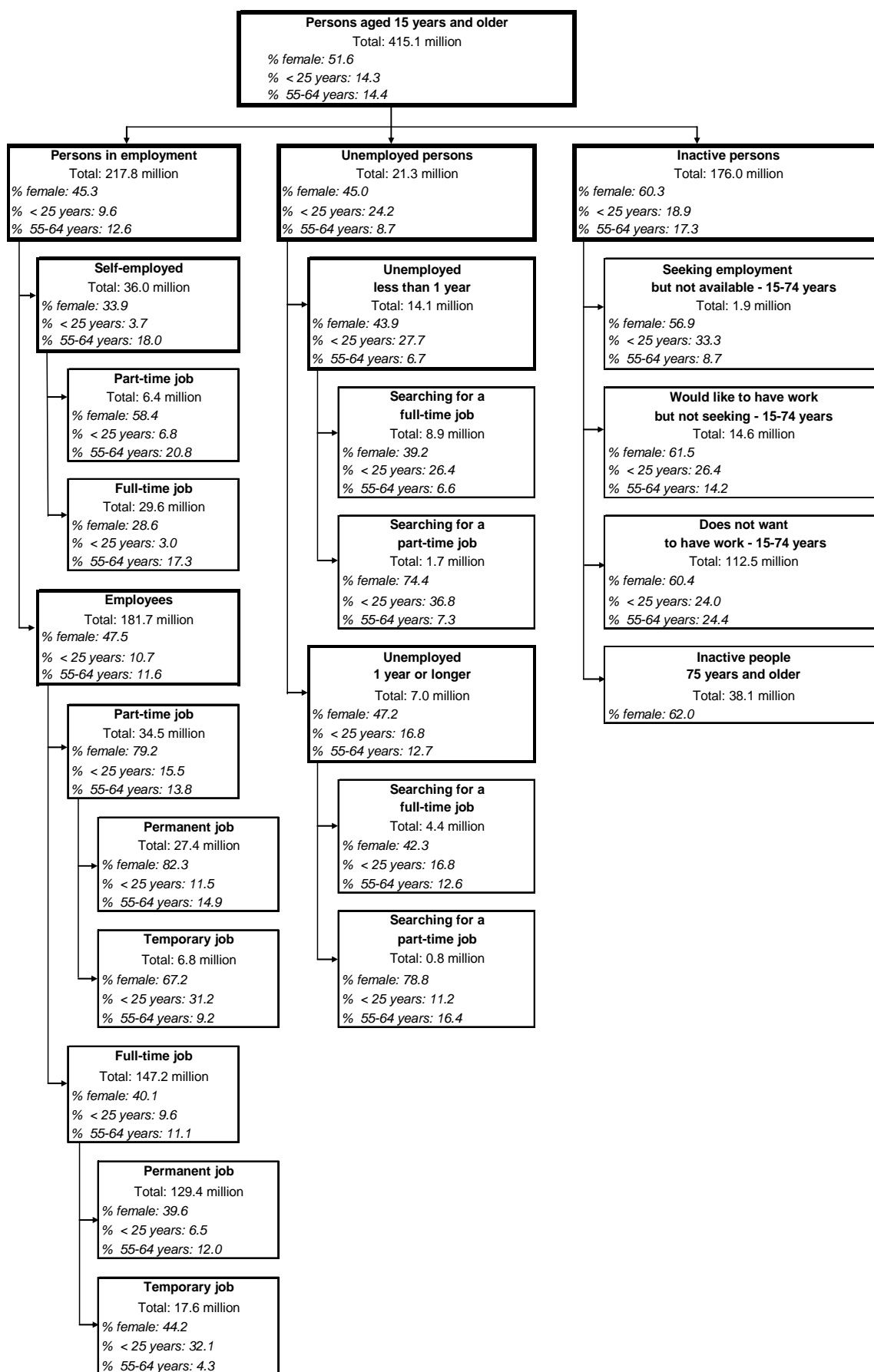
Source: Eurostat, EU-LFS ([lfsi\\_emp\\_a](#))

Notes: In chart 1 and chart 2, EU refers to EU-27. Employment rates represent employed persons (LFS concept. See methodological notes) as a percentage of the same age population.

(1) The new European Strategy for Jobs and Growth (Europe 2020) aims to raise to 75% the employment rate for men and women aged 20-64 for the EU as a whole. This headline target will be translated into specific targets for each Member State later this year (See [Conclusions of the European Council – 17 June 2010](#)).

(2) Target set by the European Council in Lisbon (2000) and Stockholm (2001), to be achieved by 2010.

## Work status of persons aged 15 years and older, EU-27, 2009 (1)



Notes: (1) Due to non-response, certain sub-totals may not exactly sum up to the corresponding aggregate

**Table 1 - Employed persons: number, employment rates and share of part-time employment, by sex, 2009**

	Total employment (1000)				Employment rates (%)						Part-time employment as a share of total employment (%)			
	Age 15 and older				Age 15-64			Age 55-64			Age 15-64			
	Total	Confidence limit	Men	Women	Total	Confidence limit	Men	Women	Total	Men	Women	Total	Men	Women
<b>EU-27</b>	<b>217 827</b>	<b>± 372</b>	<b>119 177</b>	<b>98 650</b>	<b>64.6</b>	<b>± 0.1</b>	<b>70.7</b>	<b>58.6</b>	<b>46.0</b>	<b>54.8</b>	<b>37.8</b>	<b>18.1</b>	<b>7.4</b>	<b>31.0</b>
<b>EA16</b>	<b>141 553</b>	<b>± 252</b>	<b>78 043</b>	<b>63 510</b>	<b>64.7</b>	<b>± 0.1</b>	<b>71.2</b>	<b>58.3</b>	<b>45.1</b>	<b>53.5</b>	<b>37.0</b>	<b>19.5</b>	<b>7.3</b>	<b>34.5</b>
BE	4 421	± 31	2 429	1 991	61.6	± 0.4	67.2	56.0	35.3	42.9	27.7	23.2	8.2	41.4
BG	3 254	± 61	1 732	1 521	62.6	± 1.2	66.9	58.3	46.1	54.1	39.2	2.1	1.8	2.5
CZ	4 934	± 35	2 824	2 111	65.4	± 0.5	73.8	56.7	46.8	59.6	35.0	4.8	2.0	8.5
DK	2 776	± 13	1 459	1 317	75.7	± 0.4	78.3	73.1	57.5	64.1	50.9	25.2	14.0	37.4
DE	38 797	± 106	20 859	17 938	70.9	± 0.2	75.6	66.2	56.2	63.9	48.7	25.4	8.6	44.8
EE	596	± 13	288	308	63.5	± 1.4	64.1	63.0	60.4	59.4	61.2	9.4	6.1	12.5
IE	1 917	± 15	1 038	879	61.8	± 0.5	66.3	57.4	51.0	60.9	41.0	20.7	9.8	33.4
EL	4 509	± 80	2 718	1 791	61.2	± 1.1	73.5	48.9	42.2	57.7	27.7	5.8	2.9	10.1
ES	18 888	± 89	10 646	8 242	59.8	± 0.3	66.6	52.8	44.1	56.7	32.3	12.6	4.7	22.9
FR	25 704	± 151	13 488	12 216	64.2	± 0.4	68.5	60.1	38.9	41.4	36.6	17.1	5.7	29.7
IT	23 025	± 86	13 789	9 236	57.5	± 0.2	68.6	46.4	35.7	46.7	25.4	14.1	4.7	27.9
CY	381	± 8	210	171	69.9	± 1.4	77.6	62.5	56.0	71.7	40.8	7.4	3.9	11.5
LV	983	± 10	478	505	60.9	± 0.6	61.0	60.9	53.2	53.1	53.3	8.4	7.0	9.6
LT	1 416	± 30	680	736	60.1	± 1.3	59.5	60.7	51.6	56.0	48.3	8.0	6.7	9.1
LU	217	± 2	124	93	65.1	± 0.5	73.2	57.0	38.2	46.5	29.4	17.6	4.5	34.9
HU	3 782	± 27	2 045	1 737	55.4	± 0.4	61.1	49.9	32.8	39.9	27.0	5.2	3.6	7.1
MT	162	± 2	108	54	54.9	± 0.8	71.5	37.7	28.1	45.3	11.2	10.8	4.5	23.2
NL	8 596	± 43	4 648	3 948	77.0	± 0.4	82.4	71.5	55.1	65.4	44.7	47.7	23.6	75.7
AT	4 078	± 40	2 185	1 892	71.6	± 0.7	76.9	66.4	41.1	51.0	31.7	23.7	7.4	42.4
PL	15 868	± 93	8 722	7 146	59.3	± 0.3	66.1	52.8	32.3	44.3	21.9	7.7	5.0	10.9
PT	5 054	± 52	2 688	2 367	66.3	± 0.7	71.1	61.6	49.7	57.5	42.7	8.4	4.3	13.0
RO	9 243	± 199	5 100	4 143	58.6	± 1.3	65.2	52.0	42.6	52.3	34.1	8.5	8.0	9.1
SI	981	± 15	531	450	67.5	± 1.1	71.0	63.8	35.6	46.4	24.8	9.5	7.4	12.1
SK	2 366	± 19	1 326	1 040	60.2	± 0.5	67.6	52.8	39.5	54.9	26.1	3.4	2.6	4.5
FI	2 457	± 12	1 255	1 202	68.7	± 0.3	69.5	67.9	55.5	54.6	56.3	13.3	8.3	18.5
SE	4 499	± 21	2 359	2 140	72.2	± 0.3	74.2	70.2	70.0	73.2	66.7	26.0	12.6	40.5
UK	28 923	± 138	15 448	13 474	69.9	± 0.3	74.8	65.0	57.5	66.2	49.2	25.0	10.4	41.7
IS	166	± 1	88	79	78.3	± 0.6	80.0	76.5	80.2	84.3	76.0	23.0	11.6	35.5
NO	2 499	± 14	1 309	1 190	76.4	± 0.4	78.3	74.4	68.7	72.8	64.6	27.8	14.1	42.7
CH	4 280	± 50	2 308	1 972	79.2	± 0.9	84.5	73.8	68.4	77.1	59.8	33.4	11.7	58.6
HR	1 605	± 53	869	736	56.6	± 1.9	62.4	51.0	38.4	50.1	28.0	6.9	5.2	9.0
MK	630	± 23	389	241	43.3	± 1.6	52.8	33.5	34.6	47.6	22.4	5.3	4.5	6.7
TR	21 271	± 41	15 402	5 868	44.3	± 0.1	64.5	24.2	28.2	41.1	16.0	10.6	5.9	23.0

Source: Eurostat ([lfsi\\_emp\\_a](#))

**Table 2 – Employed persons 15 and older by sex: composition by economic activity<sup>1</sup>  
(main job), 2009**

(% )	Total				Men				Women			
	Agriculture	Industry	Market services	Non-market services	Agriculture	Industry	Market services	Non-market services	Agriculture	Industry	Market services	Non-market services
<b>EU27</b>	<b>5.1</b>	<b>26.0</b>	<b>39.0</b>	<b>29.8</b>	<b>5.8</b>	<b>36.8</b>	<b>39.2</b>	<b>18.3</b>	<b>4.3</b>	<b>13.0</b>	<b>38.9</b>	<b>43.7</b>
<b>EA16</b>	<b>3.6</b>	<b>26.0</b>	<b>39.9</b>	<b>30.5</b>	<b>4.3</b>	<b>37.0</b>	<b>39.7</b>	<b>18.9</b>	<b>2.7</b>	<b>12.4</b>	<b>40.1</b>	<b>44.8</b>
BE	1.5	23.5	38.1	36.9	1.9	34.7	40.5	22.8	1.0	9.7	35.2	54.1
BG <sup>2</sup>	7.1	35.2	36.6	21.1	8.6	42.6	34.6	14.3	5.4	26.9	38.8	28.9
CZ	3.1	38.6	35.4	22.9	3.8	49.4	33.5	13.2	2.2	24.0	37.9	35.8
DK	2.5	20.3	39.6	37.5	3.9	29.6	44.7	21.8	1.1	9.9	34.0	54.9
DE	1.7	28.7	39.4	30.2	2.0	40.8	38.2	18.9	1.2	14.6	40.9	43.3
EE	4.0	31.7	37.9	26.4	5.6	44.6	36.9	12.9	(2.6)	19.7	38.7	39.0
IE	5.0	21.2	43.7	30.1	8.3	31.1	44.1	16.4	1.1	9.5	43.1	46.3
EL	11.9	21.2	41.1	25.8	11.8	29.5	40.4	18.4	12.1	8.7	42.3	37.0
ES	4.2	24.7	43.1	28.1	5.5	36.0	40.7	17.8	2.5	10.0	46.2	41.3
FR	2.9	22.6	38.2	36.3	3.9	33.7	40.3	22.2	1.9	10.3	35.9	51.9
IT	3.7	29.3	40.2	26.8	4.4	39.0	39.6	17.0	2.7	14.9	41.0	41.4
CY	3.9	22.1	46.4	27.6	4.6	32.3	44.5	18.6	3.1	9.7	48.6	38.6
LV	8.7	25.0	39.7	26.6	11.5	34.6	38.5	15.3	6.0	15.9	40.8	37.2
LT	9.2	27.0	36.8	27.0	11.7	37.0	36.8	14.5	6.9	17.8	36.8	38.5
LU	(1.4)	12.9	44.4	41.4	(1.7)	19.6	47.1	31.5	:	4.0	40.7	54.4
HU	4.6	31.2	37.8	26.4	6.3	41.3	36.8	15.6	2.6	19.4	39.0	39.0
MT	(1.4)	25.0	44.4	29.2	(1.9)	31.7	45.0	21.3	:	11.6	43.2	44.8
NL	2.8	18.0	42.6	36.6	3.7	27.6	45.9	22.9	1.7	7.1	38.7	52.5
AT	5.3	25.0	42.7	27.1	5.4	36.7	40.3	17.7	5.1	11.5	45.4	38.0
PL	13.3	31.1	33.0	22.6	13.4	42.8	31.0	12.8	13.2	16.8	35.5	34.5
PT	11.2	28.2	34.7	25.9	10.9	38.7	35.5	14.9	11.5	16.3	33.8	38.4
RO	29.1	30.0	25.3	15.6	27.8	36.6	24.5	11.1	30.7	21.9	26.1	21.2
SI	9.1	33.2	35.2	22.5	9.2	42.9	34.5	13.4	9.0	21.7	36.0	33.3
SK	3.6	37.9	34.8	23.7	4.8	50.3	31.7	13.2	2.0	22.2	38.8	37.0
FI	4.6	23.9	38.5	32.9	6.3	37.3	40.3	16.0	2.9	10.0	36.6	50.6
SE	2.2	20.2	40.5	37.2	3.3	31.5	45.7	19.6	1.0	7.7	34.7	56.6
UK	1.1	19.6	43.5	35.7	1.6	30.0	46.5	21.9	0.6	7.7	40.1	51.6
IS	4.5	19.7	41.1	34.7	6.8	29.3	45.4	18.4	:	8.9	36.3	52.8
NO	2.7	20.2	38.2	38.9	4.1	32.2	42.4	21.3	1.2	7.1	33.6	58.2
CH	3.2	22.1	42.3	32.4	4.0	31.6	43.5	20.9	2.4	10.7	40.8	46.2
HR	13.9	28.9	35.3	22.0	12.8	39.4	34.5	13.3	15.1	16.4	36.2	32.2
MK	:	:	:	:	:	:	:	:	:	:	:	:
TR	22.9	25.3	32.5	19.3	17.2	29.1	36.7	16.9	37.9	15.3	21.3	25.5

Source: Eurostat, EU-LFS ([lfsa\\_egan2](#))

Notes :

(1) The breakdown of employed persons by economic activity is based on the classification NACE Rev 2 (with the following correspondence: NACE section A - agriculture, sections B to F - industry, sections G to N - market services, and sections O to U - non-market services).

(2) Due to the very high proportion of persons employed in agriculture in addition to another main occupation, the Labour Force Survey does not provide a precise estimate of total employment in this sector.

**Table 3 – Employed persons 15 and older by sex: composition by occupation<sup>1</sup> (main job), 2009**

Total				Men				Women				(%)
Skilled non manual	Low skilled non manual	Skilled manual	Elementary occup.	Skilled non manual	Low skilled non manual	Skilled manual	Elementary occup.	Skilled non manual	Low skilled non manual	Skilled manual	Elementary occup.	
<b>39.9</b>	<b>24.7</b>	<b>25.8</b>	<b>9.6</b>	<b>38.6</b>	<b>13.9</b>	<b>39.1</b>	<b>8.4</b>	<b>41.5</b>	<b>37.7</b>	<b>9.8</b>	<b>11.1</b>	<b>EU-27</b>
<b>40.8</b>	<b>25.0</b>	<b>24.4</b>	<b>9.8</b>	<b>39.8</b>	<b>14.5</b>	<b>37.9</b>	<b>7.8</b>	<b>42.0</b>	<b>37.9</b>	<b>7.8</b>	<b>12.3</b>	<b>EA16</b>
45.5	26.5	18.9	9.0	45.9	16.4	30.4	7.4	45.2	38.9	5.0	11.0	BE
30.3	23.7	33.4	12.6	26.7	15.2	44.8	13.4	34.5	33.3	20.4	11.8	BG
41.9	19.3	33.5	5.4	37.8	10.7	47.5	4.0	47.4	30.7	14.7	7.2	CZ
46.1	26.3	17.6	10.1	45.2	14.2	29.8	10.9	47.0	39.7	4.1	9.2	DK
43.5	24.9	23.3	8.3	41.7	13.3	37.8	7.2	45.6	38.4	6.4	9.6	DE
42.6	18.1	29.9	9.4	35.5	8.1	49.4	7.1	49.3	27.5	11.7	11.5	EE
42.3	32.1	17.9	7.7	43.3	17.6	30.4	8.7	41.2	49.1	3.1	6.6	IE
35.0	25.4	32.2	7.3	33.2	18.1	43.1	5.5	37.7	36.5	15.7	10.1	EL
34.5	26.3	25.0	14.2	33.2	16.3	39.8	10.7	36.2	39.2	5.8	18.8	ES
42.5	24.7	23.1	9.7	43.6	12.4	37.7	6.2	41.4	38.2	7.0	13.4	FR
39.8	23.4	26.9	10.0	37.6	16.0	38.1	8.2	42.9	34.4	10.1	12.6	IT
32.6	29.6	22.0	15.8	34.7	17.9	36.3	11.1	30.1	43.9	4.6	21.4	CY
42.0	18.5	26.5	13.0	34.3	9.5	43.2	13.0	49.3	27.1	10.6	13.0	LV
40.7	17.7	33.0	8.6	32.7	8.8	50.9	7.5	48.1	25.8	16.5	9.6	LT
56.2	21.6	14.2	7.9	56.2	16.3	23.0	4.6	56.3	28.8	(2.6)	12.3	LU
36.5	23.5	31.5	8.4	30.8	15.0	47.5	6.7	43.3	33.6	12.7	10.4	HU
38.0	28.7	21.2	12.1	35.8	22.0	28.5	13.7	42.5	42.2	6.6	8.7	MT
49.6	26.5	15.2	8.8	50.7	14.8	25.7	8.8	48.4	40.1	2.8	8.7	NL
38.2	27.5	23.6	10.7	40.3	14.4	36.4	8.8	35.7	42.6	8.7	12.9	AT
34.5	19.0	38.9	7.6	28.2	11.4	54.0	6.4	42.2	28.1	20.4	9.2	PL
26.1	25.3	37.0	11.7	26.6	15.8	50.5	7.0	25.4	36.0	21.6	17.1	PT
22.7	15.9	50.7	10.7	19.7	9.8	59.0	11.6	26.5	23.4	40.5	9.7	RO
41.1	20.8	30.1	8.0	37.3	14.1	42.5	6.1	45.5	28.7	15.6	10.2	SI
36.4	21.0	34.2	8.4	29.9	11.9	49.6	8.6	44.7	32.6	14.5	8.1	SK
46.1	22.5	23.8	7.6	45.7	8.9	38.9	6.6	46.5	36.7	8.0	8.7	FI
46.1	27.4	20.5	6.0	45.0	14.4	34.7	5.9	47.3	41.6	5.0	6.1	SE
43.6	30.2	15.9	10.2	46.2	14.3	27.7	11.8	40.7	48.3	2.5	8.5	UK
48.5	24.9	20.3	6.2	43.4	16.7	34.1	5.7	54.2	34.0	5.0	6.8	IS
45.0	30.6	19.9	4.5	43.8	18.6	34.2	3.4	46.3	43.9	4.1	5.7	NO
48.1	24.0	22.1	5.8	49.1	13.4	33.7	3.8	47.0	36.4	8.5	8.2	CH
32.3	26.1	34.2	7.4	31.3	16.9	45.2	6.6	33.5	36.9	21.2	8.4	HR
27.8	22.0	25.3	24.9	25.3	19.7	29.9	25.1	31.9	25.7	17.8	24.7	MK
22.0	19.1	43.4	15.5	22.5	18.6	44.6	14.4	20.8	20.4	40.4	18.5	TR

Source: Eurostat, EU-LFS ([lfsa\\_egais](#))

Note: (1) The breakdown of employed persons by occupation is based on the classification ISCO 88-COM (groups 1 to 3 for skilled non manual, 4 to 5 for low skilled non manual, 6 to 8 for skilled manual and 9 for elementary occupations).

**Table 4 – Employees aged 15 and older: number, average hours usually worked per week and share of temporary contracts (main job), by sex, 2009**

	Number of employees (1000)			Hours usually worked per week						Share of employees with limited duration contract (%)		
	Total	Men	Women	Full time			Part time			Total	Men	Women
				Total	Men	Women	Total	Men	Women			
<b>EU-27</b>	<b>181 711</b>	<b>95 315</b>	<b>86 396</b>	<b>40.4</b>	<b>41.2</b>	<b>39.3</b>	<b>20.1</b>	<b>19.2</b>	<b>20.4</b>	<b>13.5</b>	<b>12.7</b>	<b>14.4</b>
<b>EA16</b>	<b>118 842</b>	<b>62 745</b>	<b>56 097</b>	<b>40.0</b>	<b>40.6</b>	<b>38.8</b>	<b>20.1</b>	<b>19.2</b>	<b>20.3</b>	<b>15.2</b>	<b>14.2</b>	<b>16.5</b>
BE	3 766	2 000	1 767	39.1	39.7	38.1	23.9	24.5	23.8	8.2	6.5	10.2
BG	2 848	1 476	1 372	41.3	41.6	41.1	20.5	(20.5)	20.5	4.7	5.2	4.2
CZ	4 107	2 237	1 870	41.3	42.0	40.4	22.5	21.5	22.9	8.5	7.0	10.2
DK	2 522	1 273	1 248	37.7	38.0	37.2	19.2	14.9	21.0	8.9	8.3	9.6
DE	34 338	17 891	16 447	40.6	41.0	39.8	18.2	16.7	18.5	14.5	14.4	14.6
EE	547	255	292	40.6	41.1	40.0	21.5	21.8	21.4	2.5	(3.0)	(2.0)
IE	1 580	766	814	38.3	39.8	36.6	18.9	19.8	18.7	8.5	7.4	9.6
EL	2 898	1 661	1 237	40.7	41.6	39.4	20.4	21.8	19.9	12.1	10.6	14.1
ES	15 681	8 494	7 187	40.5	41.2	39.3	19.1	18.7	19.2	25.4	23.8	27.3
FR	22 898	11 572	11 326	39.4	40.1	38.4	23.2	22.5	23.3	13.5	12.1	14.9
IT	17 277	9 748	7 529	39.0	40.2	36.9	22.0	22.3	22.0	12.5	10.8	14.6
CY	305	158	147	40.8	41.6	39.9	21.7	21.7	21.7	13.4	7.5	19.8
LV	871	409	462	40.8	41.3	40.3	21.8	22.8	21.3	4.3	5.8	2.9
LT	1 245	579	666	39.7	40.1	39.3	21.5	21.9	21.2	2.2	(2.9)	(1.6)
LU	198	112	87	40.1	40.7	39.0	20.6	19.2	20.8	7.2	6.3	8.4
HU	3 310	1 730	1 580	40.5	40.8	40.1	24.1	24.5	23.9	8.5	9.0	7.8
MT	140	90	50	40.4	41.1	39.0	22.1	22.0	22.2	4.8	3.7	6.7
NL	7 434	3 900	3 534	38.9	39.1	38.2	19.8	19.2	20.1	18.2	16.4	20.3
AT	3 532	1 848	1 685	42.1	42.7	41.0	20.9	19.2	21.3	9.1	9.2	9.0
PL	12 260	6 548	5 712	41.0	42.2	39.6	22.1	22.7	21.8	26.5	26.3	26.6
PT	3 856	1 991	1 865	40.2	40.9	39.3	19.7	20.2	19.5	22.0	20.9	23.2
RO	6 213	3 415	2 798	41.2	41.4	40.8	23.4	(24.6)	22.7	1.0	1.1	1.0
SI	822	430	392	41.1	41.5	40.7	20.9	20.6	21.2	16.4	15.1	17.8
SK	1 995	1 057	938	40.6	41.2	40.0	23.2	23.2	23.1	4.4	4.6	4.1
FI	2 123	1 029	1 094	39.0	39.9	38.1	19.8	18.3	20.5	14.6	10.6	18.3
SE	4 018	2 011	2 007	39.9	40.0	39.8	24.2	21.0	25.3	15.3	13.0	17.6
UK	24 929	12 636	12 293	42.2	43.6	40.1	19.1	18.0	19.3	5.7	5.3	6.1
IS	146	73	73	44.3	46.2	41.5	20.7	18.2	21.4	9.7	8.9	10.5
NO	2 297	1 165	1 132	38.5	38.8	38.0	19.6	17.2	20.5	8.1	6.5	9.8
CH	3 631	1 911	1 720	:	:	:	:	:	:	13.2	12.9	13.6
HR	1 259	671	588	41.4	41.8	41.0	(22.3)	(22.5)	(22.2)	11.6	11.4	11.9
MK	453	269	184	43.2	43.7	42.6	(21.2)	(22.3)	(20.1)	15.5	17.4	12.6
TR	12 768	9 770	2 998	52.1	53.2	48.4	20.3	20.7	19.9	10.7	10.5	11.5

Source: Eurostat, EU-LFS ([lfsi\\_emp\\_a](#), [lfsa\\_ewhuis](#))

**Table 5 – Unemployed persons: number, unemployment rate, share of long-term unemployment and youth unemployment ratio, by sex, 2009**

Total unemployment (1000)				Unemployment rate (%)			Share of long-term-unemployment (%)			Youth unemployment ratio (%)	
Total	Confidence limit	Men	Women	Total	Men	Women	Total	Men	Women		
<b>21 263</b>	<b>± 205</b>	<b>11 697</b>	<b>9 566</b>	<b>8.9</b>	<b>9.0</b>	<b>8.8</b>	<b>33.2</b>	<b>31.8</b>	<b>34.8</b>	<b>8.7</b>	<b>EU-27</b>
<b>14 687</b>	<b>± 0</b>	<b>7 911</b>	<b>6 776</b>	<b>9.4</b>	<b>9.3</b>	<b>9.6</b>	<b>35.7</b>	<b>33.9</b>	<b>37.8</b>	<b>8.6</b>	<b>EA16</b>
380	± 0	204	176	7.9	7.8	8.1	44.2	43.5	45.0	7.1	BE
238	± 16	130	108	6.8	7.0	6.6	43.3	40.7	46.4	4.8	BG
352	± 17	175	177	6.7	5.9	7.7	30.0	27.8	32.3	5.3	CZ
177	± 10	102	75	6.0	6.5	5.4	9.1	8.9	9.4	8.0	DK
3 227	± 46	1 835	1 392	7.5	8.0	6.9	45.5	44.4	47.0	5.8	DE
95	± 10	59	37	13.8	16.9	10.6	27.4	26.8	(28.4)	11.0	EE
255	± 14	179	76	11.9	14.9	8.0	29.0	32.1	21.7	11.3	IE
471	± 19	200	271	9.5	6.9	13.2	40.8	34.4	45.6	8.0	EL
4 150	± 93	2 292	1 857	18.0	17.7	18.4	23.7	20.9	27.2	17.1	ES
2 573	± 81	1 312	1 260	9.5	9.2	9.8	35.2	35.3	35.1	9.2	FR
1 945	± 50	1 000	945	7.8	6.8	9.3	44.4	42.0	46.9	7.4	IT
21	± 3	11	10	5.3	5.2	5.5	10.4	(10.3)	(10.4)	5.7	CY
203	± 14	122	81	17.1	20.3	13.9	26.7	27.1	26.0	14.0	LV
225	± 19	140	85	13.7	17.1	10.4	23.2	21.0	26.8	8.9	LT
12	± 1	6	6	5.2	4.6	6.0	(23.1)	(19.8)	(26.0)	5.5	LU
421	± 18	234	187	10.0	10.3	9.7	41.6	41.3	41.9	6.5	HU
12	± 1	8	4	6.9	6.6	7.6	44.0	50.1	:	7.4	MT
304	± 12	162	142	3.4	3.4	3.5	24.8	23.7	26.1	4.8	NL
204	± 11	114	90	4.8	5.0	4.6	21.3	21.6	20.9	6.0	AT
1 411	± 53	734	678	8.2	7.8	8.7	30.3	27.9	33.0	7.0	PL
529	± 29	261	267	9.6	9.0	10.3	44.2	40.8	47.5	7.9	PT
681	± 43	424	257	6.9	7.7	5.8	31.6	32.2	30.6	6.4	RO
61	± 4	33	28	5.9	5.9	5.8	30.1	(28.3)	(32.1)	5.6	SI
323	± 19	170	153	12.0	11.4	12.8	54.0	50.9	57.4	8.6	SK
221	± 6	122	99	8.2	8.9	7.6	16.8	18.3	14.8	10.9	FI
410	± 11	224	186	8.3	8.6	8.0	13.3	13.8	12.6	12.8	SE
2 363	± 85	1 444	919	7.6	8.6	6.4	24.5	26.5	21.4	11.4	UK
13	± 1	8	5	7.2	8.6	5.7	:	:	:	11.6	IS
80	± 5	48	32	3.1	3.6	2.6	16.5	16.0	17.2	5.3	NO
182	± 13	89	93	4.1	3.8	4.5	28.2	24.0	32.3	5.6	CH
160	± 12	76	84	9.1	8.0	10.3	56.2	50.8	61.0	8.6	HR
299	± 13	181	118	32.2	31.8	32.8	81.6	82.2	80.6	19.3	MK
3 053	± 86	2 206	847	12.5	12.5	12.6	22.7	20.0	30.0	8.5	TR

Source: Eurostat, EU-LFS ([une\\_nb\\_a](#), [une\\_rt\\_a](#), [une\\_ltu\\_a](#))

Notes:

- Total unemployment, the unemployment rate and the share of long-term unemployment refer to persons aged 15-74.
- Long-term unemployed persons are persons who have been unemployed for one year or more, i.e. unemployed persons who either have searched for employment for one year or longer or left the last job one year or more ago, whichever period is shorter. The share of long-term unemployment represents long-term unemployed persons as a percentage of total unemployment.
- Youth unemployment ratio represents unemployed aged 15-24 years as a percentage of the total population of this age group.

## Methodological notes

---

**Source:** the European Union Labour Force Survey (EU-LFS) is a quarterly, large sample survey providing results for the population in private households in the EU, EFTA, and the Candidate Countries. Conscripts in military or community service are not included in the results.

The yearly sampling rates (population aged 15 and older) vary between 0.56% and 6.85%. The concepts and definitions used in the survey follow the guidelines of International Labour Organisation.

Definitions of indicators presented in this publication are on the Eurostat website:

[http://epp.eurostat.ec.europa.eu/portal/page/portal/employment\\_unemployment\\_lfs/methodology/definitions](http://epp.eurostat.ec.europa.eu/portal/page/portal/employment_unemployment_lfs/methodology/definitions)

**Reference period:** Yearly results are obtained as annual averages of quarterly results, except for Switzerland, for which data refer to the 2<sup>nd</sup> quarter 2009.

**Coverage:** The data for France cover the metropolitan territory (excluding overseas regions)

**Definitions:** Employment (LFS concept) covers persons aged 15 years and over living in private households, who during the reference week performed work, even for just one hour, for pay, profit or family gain or were not at work but had a job or business from which they were temporarily absent, for example because of illness, holidays, industrial dispute or education and training. The LFS employment concept differs from NA domestic employment, as the latter sets no limit for age or type of household, and also includes the non-resident population contributing to GDP and conscripts in military or community service.

**Aggregates:** When data are unavailable for a country, the calculation of the corresponding aggregates takes into account the data for the same country one year before.

**Confidence limits:** All confidence limits are calculated at a level of confidence of 95%. The country limits are derived from coefficients of variation calculated by the National Statistic Institutes. When a coefficient is not available, the coefficient for the last year available is taken. For the calculation of limits of aggregates, we assume that the EU-LFS is a stratified sample with the country as the first stratum.

**Country codes:** Belgium (BE), Bulgaria (BG), the Czech Republic (CZ), Denmark (DK), Germany (DE), Estonia (EE), Ireland (IE), Greece (EL), Spain (ES), France (FR), Italy (IT), Cyprus (CY), Latvia (LV), Lithuania (LT), Luxembourg (LU), Hungary (HU), Malta (MT), the Netherlands (NL), Austria (AT), Poland (PL), Portugal (PT), Romania (RO), Slovenia (SI), Slovakia (SK), Finland (FI), Sweden (SE), the United Kingdom (UK), Iceland (IS), Norway (NO), Switzerland (CH), Croatia (HR), the former Yugoslav Republic of Macedonia (MK), Turkey (TR).

The abbreviation MK used for the former Yugoslav Republic of Macedonia is a provisional code which does not prejudice in any way the definitive nomenclature for this country, which will be agreed following the conclusions of negotiations currently taking place on this subject at the United Nations.

**Symbols:** Figures shown in brackets lack reliability due to small sample size; “:” colons are used for unavailable or extremely unreliable data.

## Further information

---

### European Statistical Data Support

Contact details for this support network can be found on our Internet site:

<http://ec.europa.eu/eurostat/>

### Data

Data on "Population and Social conditions, Labour force survey":

[http://epp.eurostat.ec.europa.eu/portal/page/portal/employment\\_unemployment\\_lfs/data/database](http://epp.eurostat.ec.europa.eu/portal/page/portal/employment_unemployment_lfs/data/database)

More information about "Population and Social conditions, Labour force survey":

[http://epp.eurostat.ec.europa.eu/portal/page/portal/employment\\_unemployment\\_lfs/introduction](http://epp.eurostat.ec.europa.eu/portal/page/portal/employment_unemployment_lfs/introduction)

---

Manuscript completed on: 23.07.2010

Data extracted on: 15.07.2010

ISSN 1977-0340

Catalogue number: KS-QA-10-035-EN-N

© European Union, 2010